

EVOLAS

LASER-Crafted Art

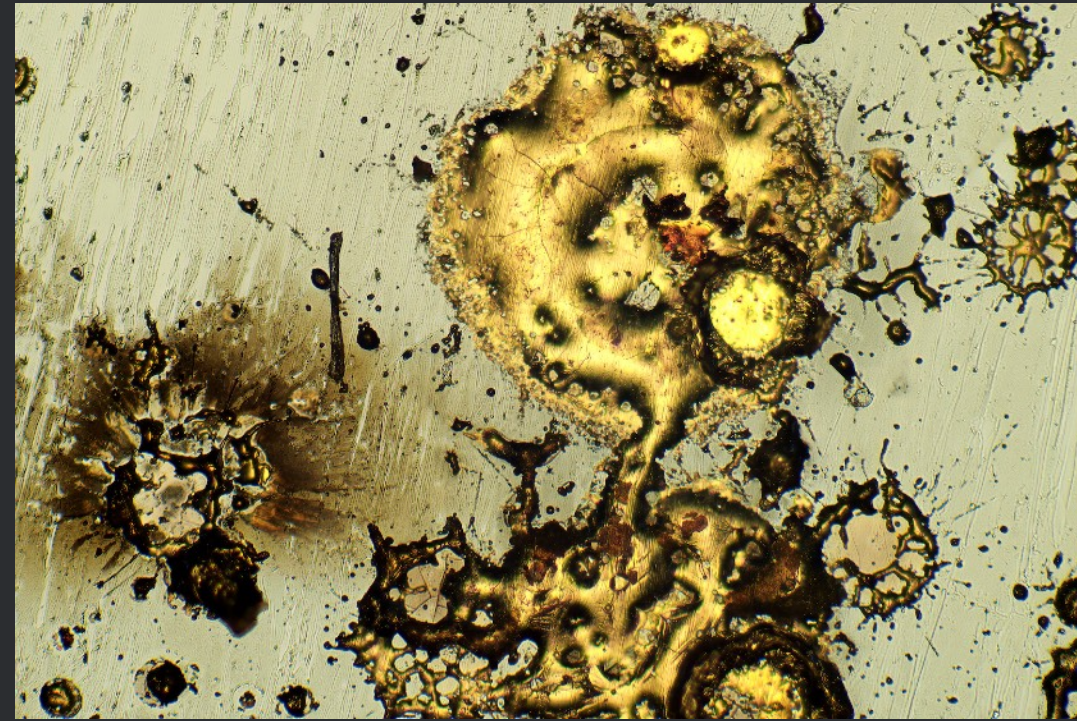
Where light ignites matter.

And matter becomes art.

Preview Gallery | EM-P-00037-46036

Exclusive Motifs on EVOLAS GLOBE EG-00234-46008

About This Gallery



Main EVOLAS Motif:

ARTWORK NAME: “Critical Exposure”
MOTIF ID: EM-P-00037-46036
GLOBE ID: EG-00234-46008
EDITION: 10

This preview presents the additional motifs that exist on the same EVOLAS GLOBE as the main artwork *Critical Exposure*. All motifs shown here originate from different regions of a single microscopic metal landscape formed under deliberately extreme process conditions and permanently preserved on this GLOBE.

The main artwork represents a carefully selected region within this landscape — a region in which material density, dispersion, and residue converge under sustained high-energy exposure. The additional motifs do not constitute independent works; instead, they reveal adjacent regions shaped by the same physical event, where intensity, fragmentation, and material behavior vary locally across the same material field.

All motifs were individually identified, selected, and artistically articulated under identical microscopic and optical conditions. While sharing the same physical origin, each motif reflects a distinct curatorial and compositional decision, emphasizing different manifestations of stress, dispersion, accumulation, or collapse within the same material landscape.

Differences between the motifs arise from local variations in material response and spatial orientation rather than from changes in process parameters or technique. What differs is not how the GLOBE was created, but where and how its material reality is observed and articulated.

Access to the acquisition of any additional motif is exclusively reserved for collectors who have acquired the corresponding main artwork derived from this GLOBE. Each additional motif therefore constitutes an extension of that specific artwork and cannot be obtained outside this defined relationship.

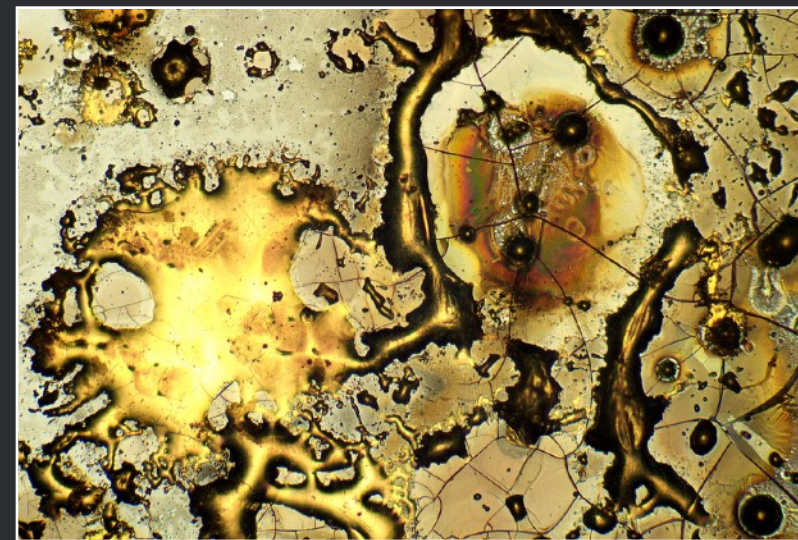
This preview gallery presents the complete set of additional motifs together with their individual EVOLAS codes, providing a structured overview of the visual possibilities contained within a single GLOBE.

Additional Motifs

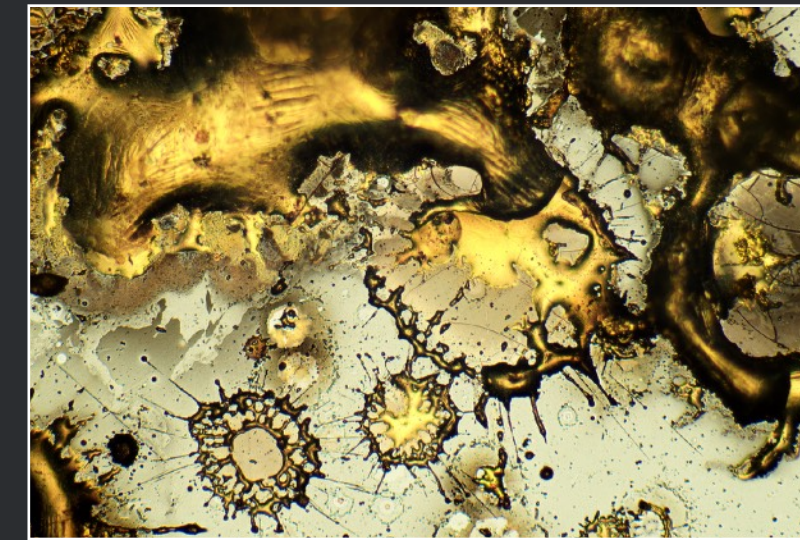
On EVOLAS GLOBE EG-00234-46008



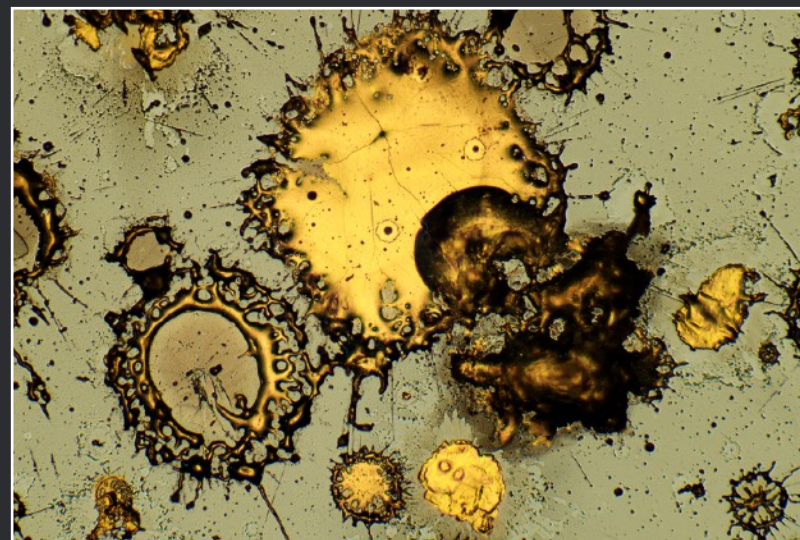
EM-C-00042-46036



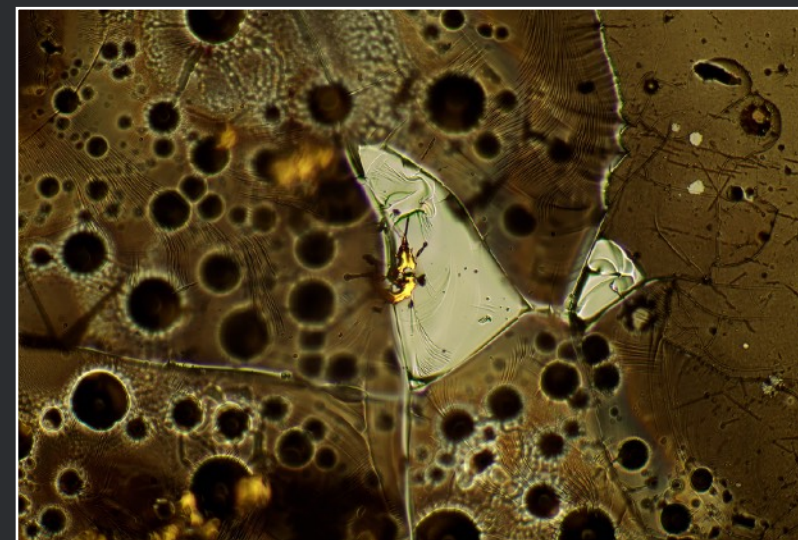
EM-C-00043-46036



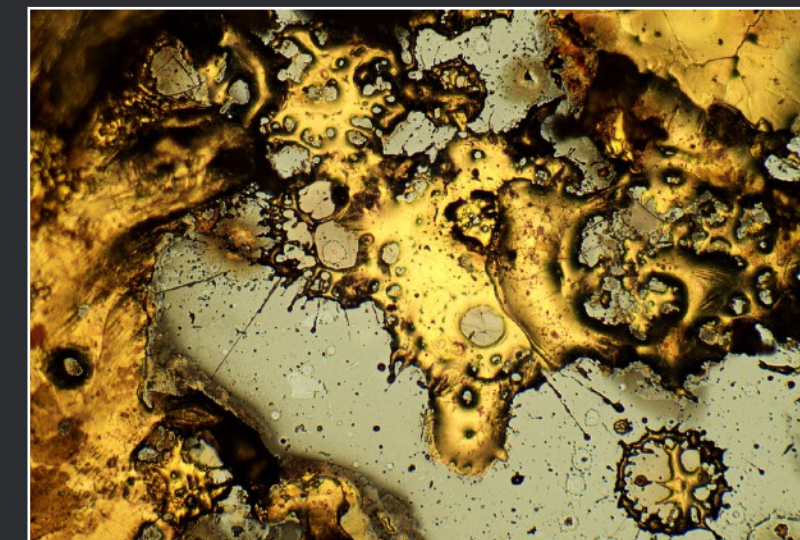
EM-C-00045-46036



EM-C-00047-46036



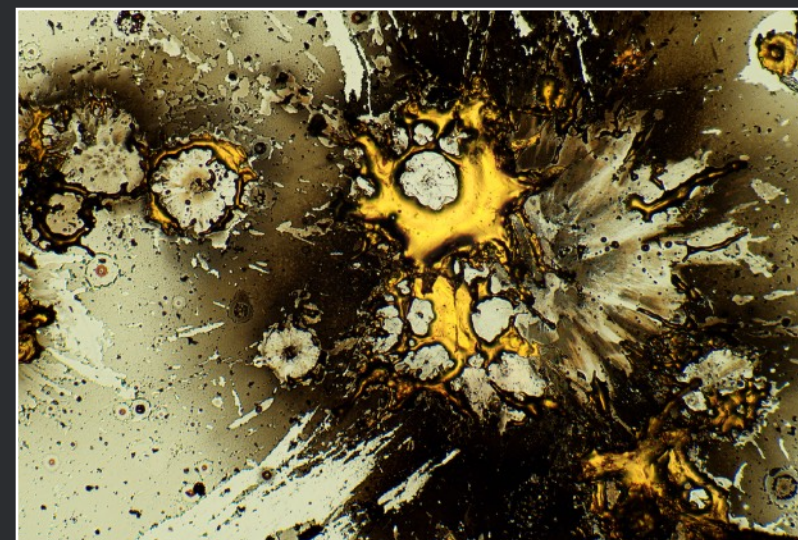
EM-C-00049-46036



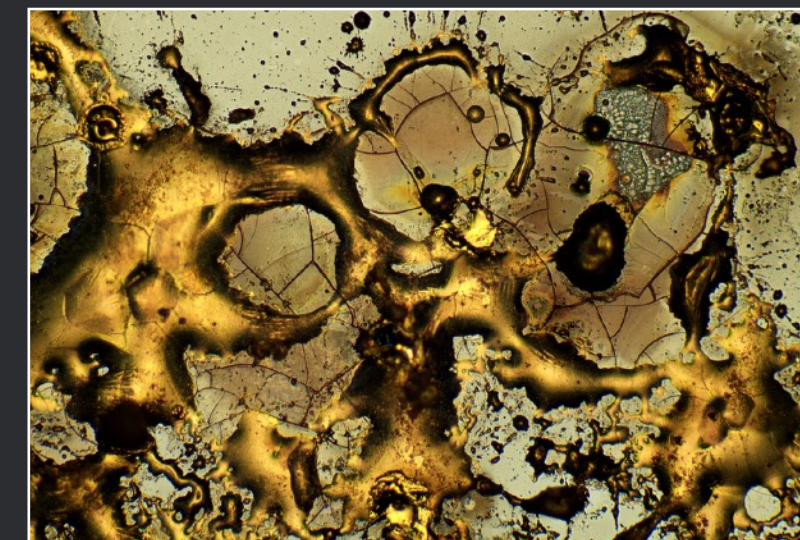
EM-C-00048-46036



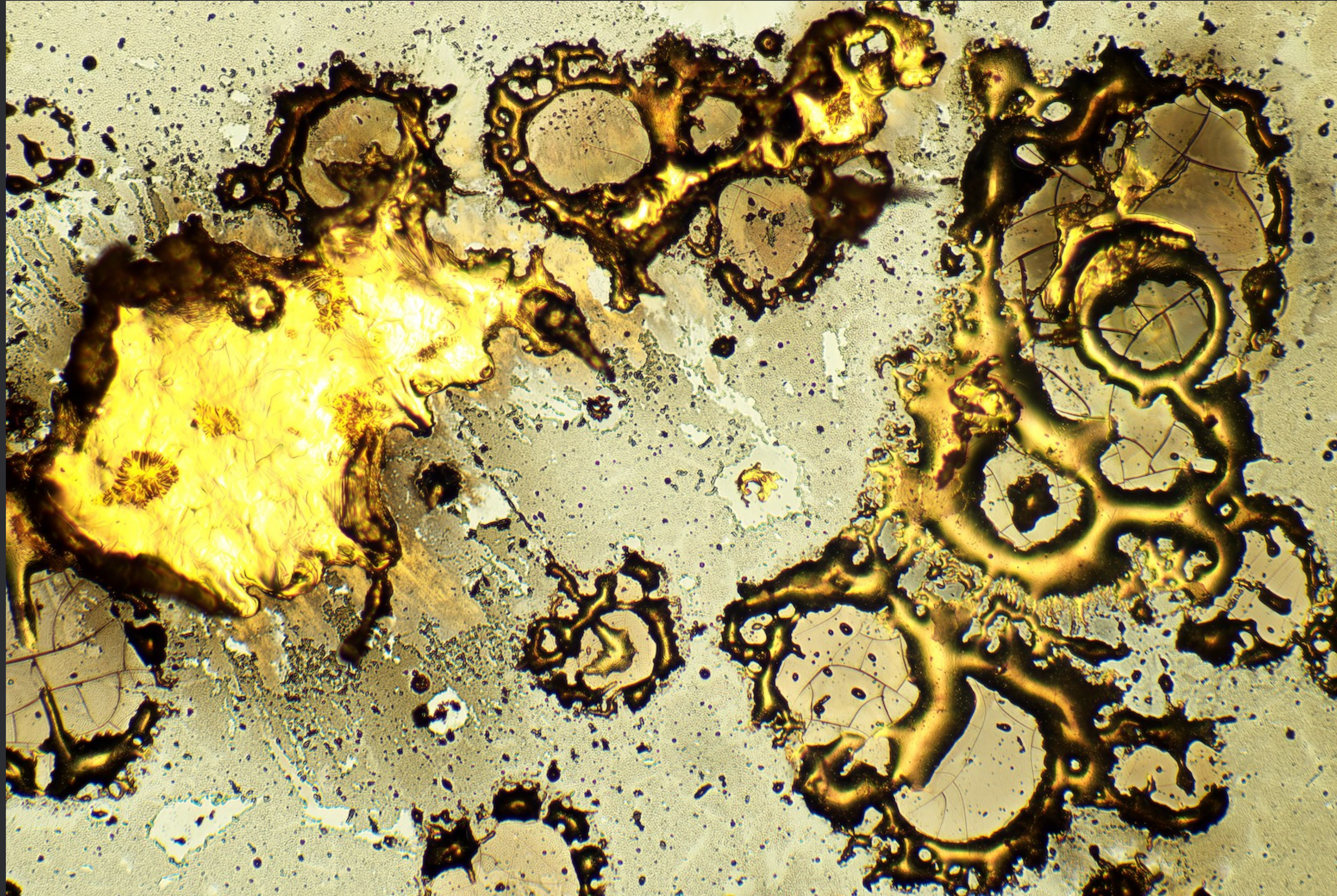
EM-C-00051-46036



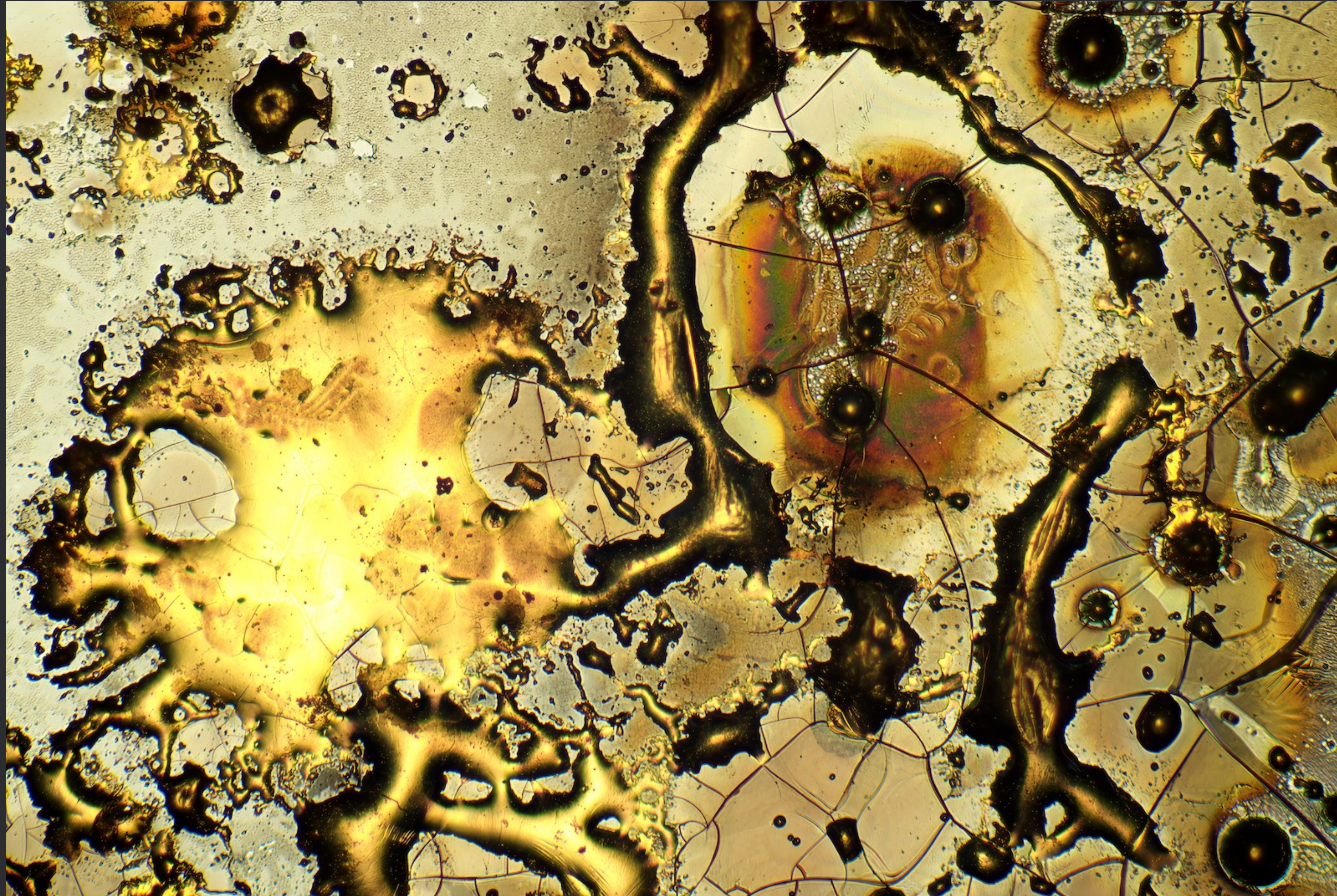
EM-C-00052-46036



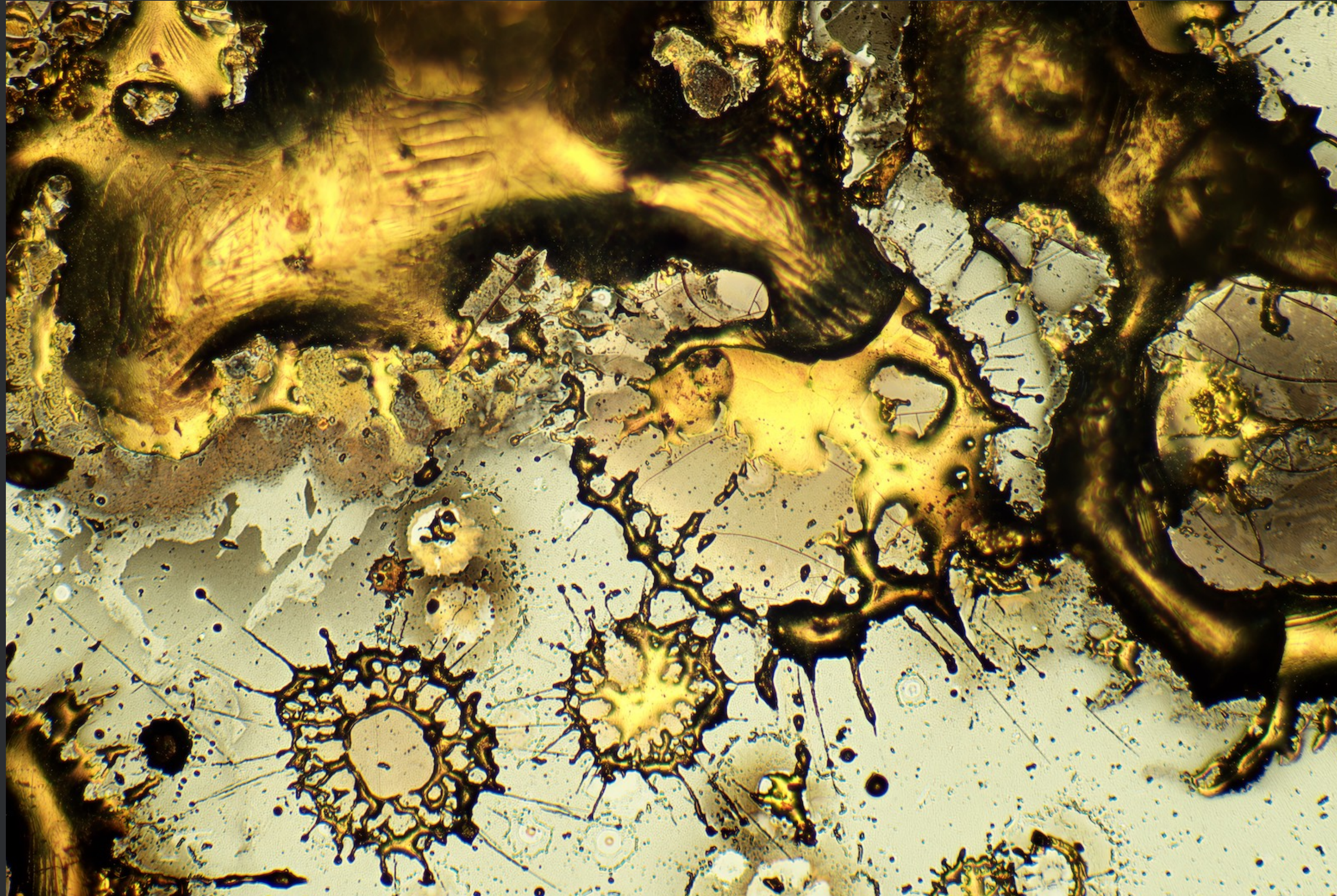
EM-C-00053-46036



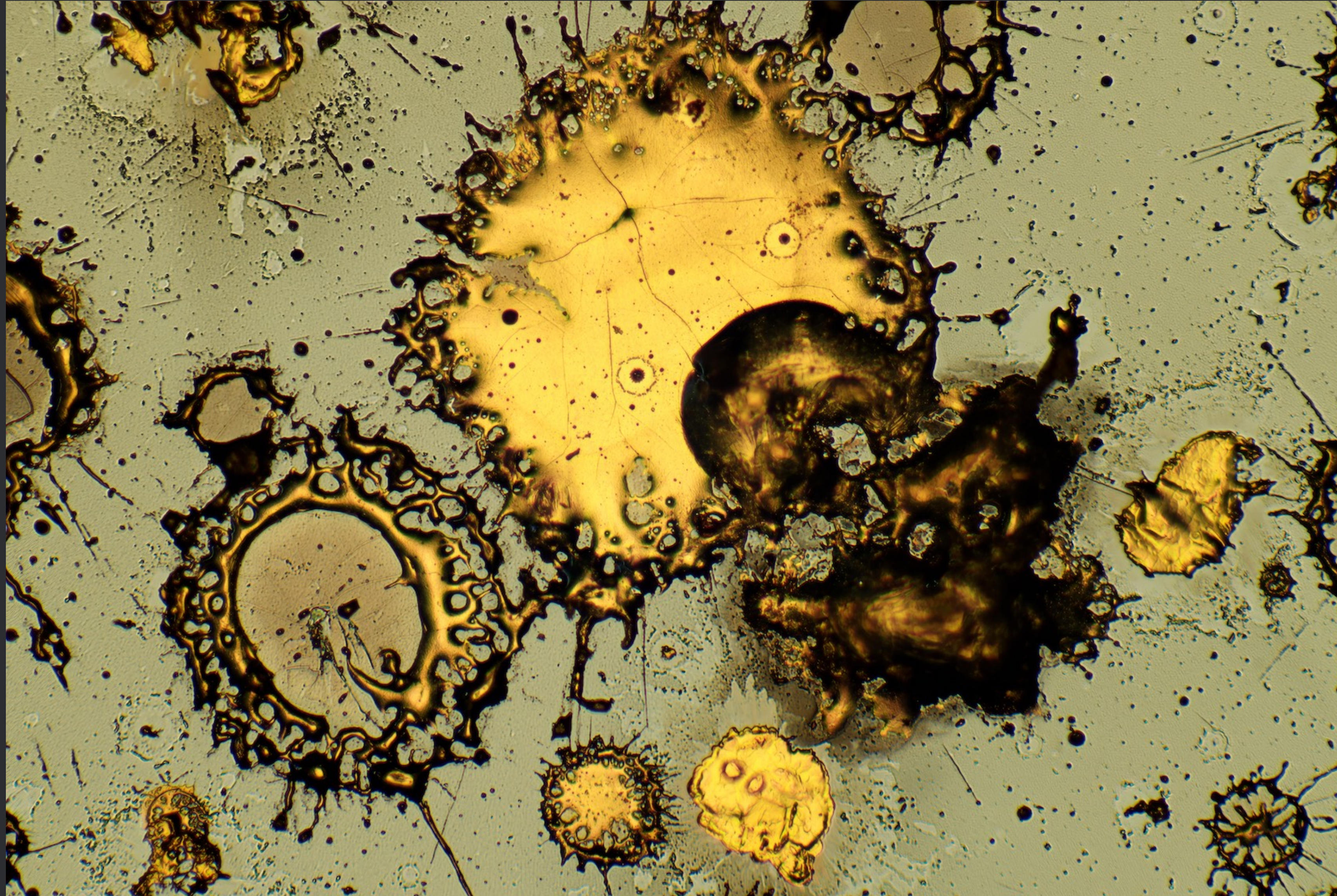
EM-C-00042-46036



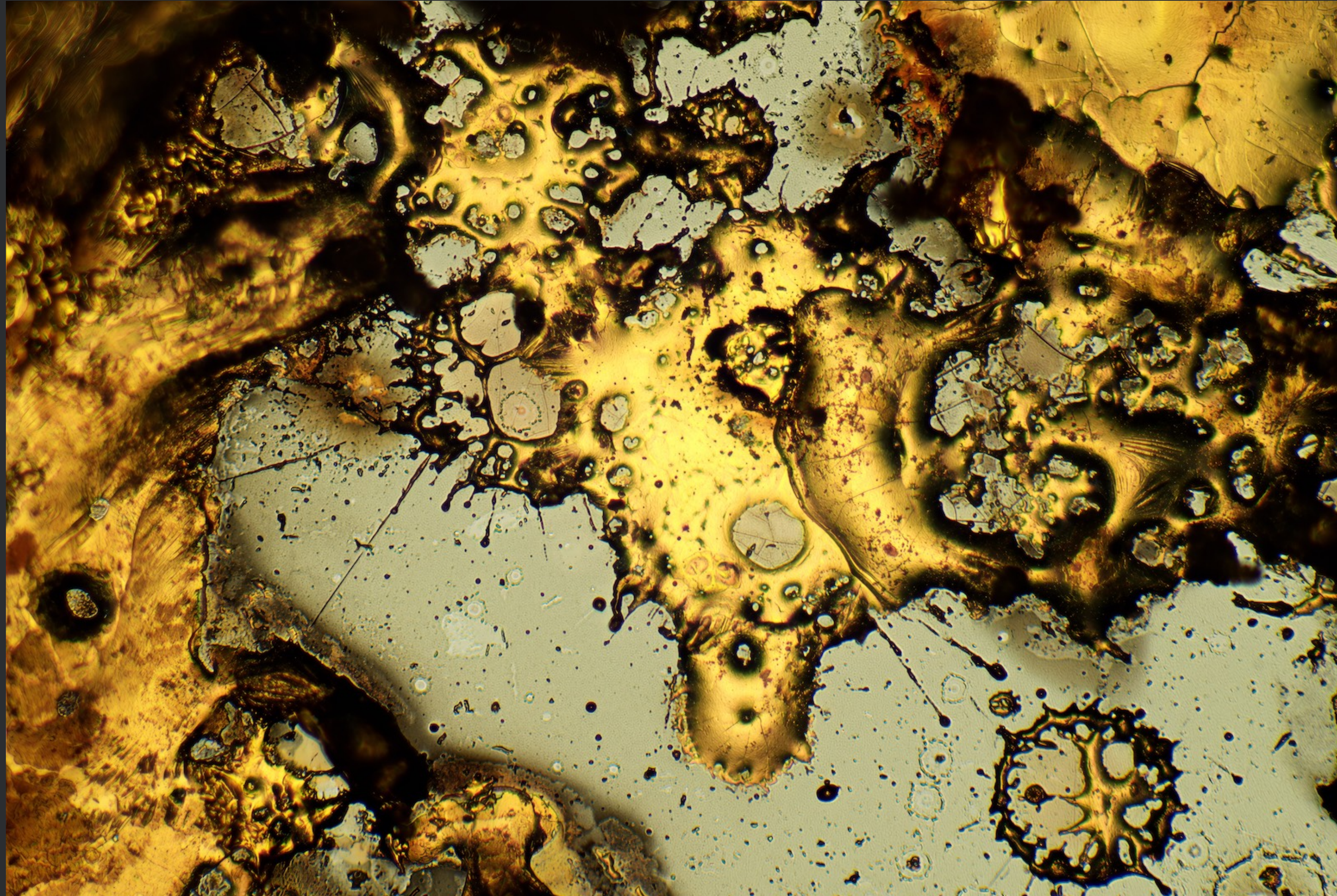
EM-C-00043-46036



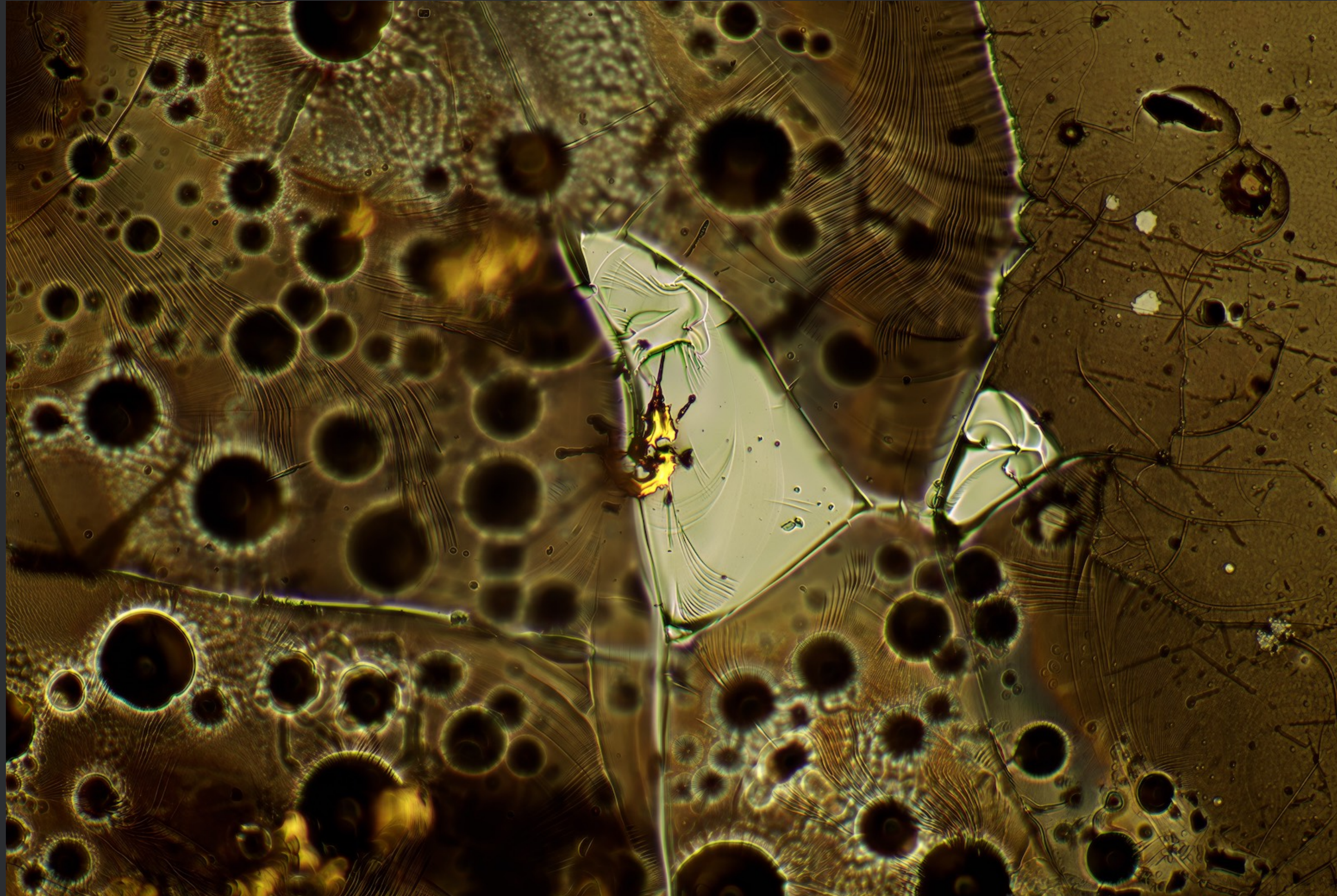
EM-C-00045-46036



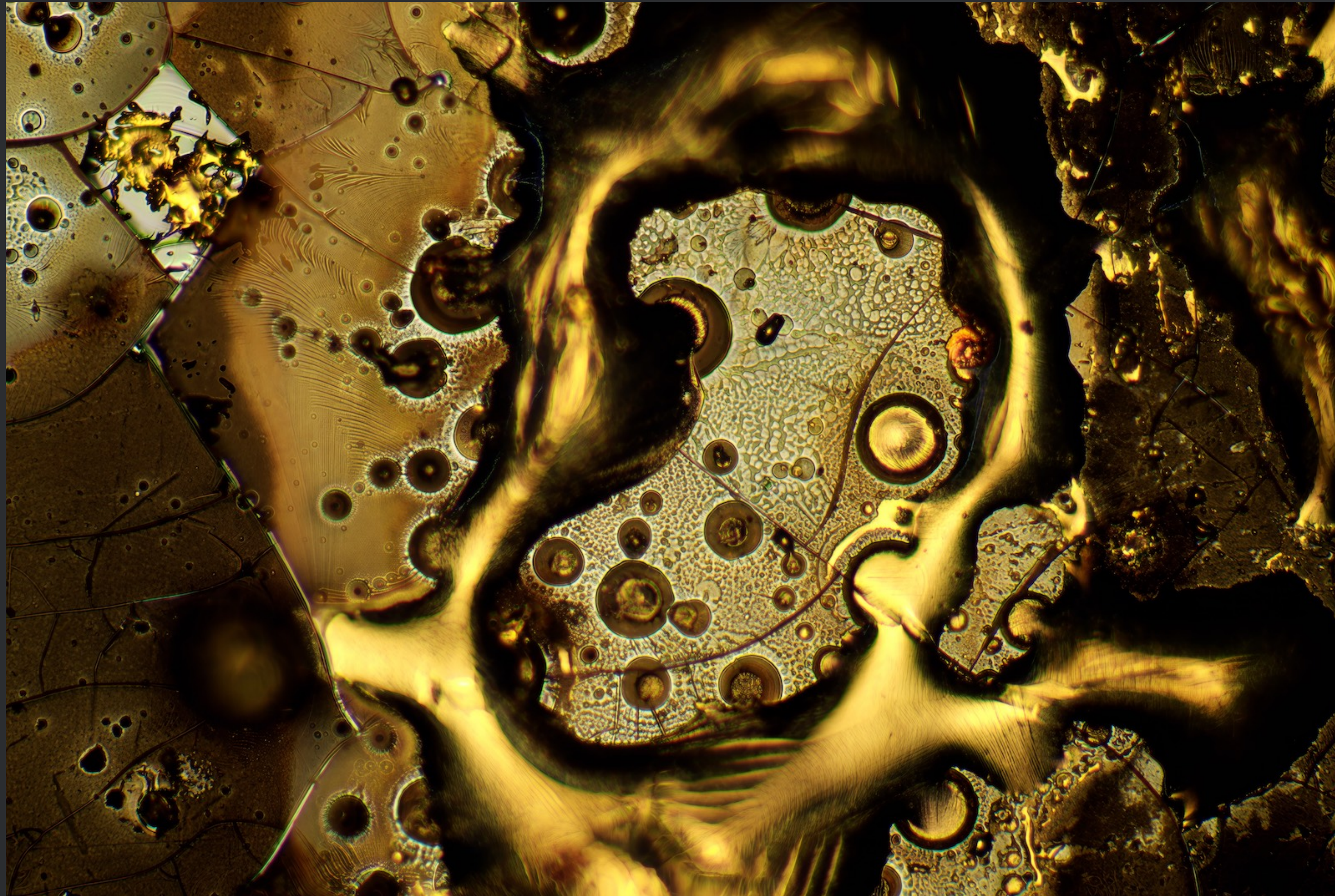
EM-C-00047-46036



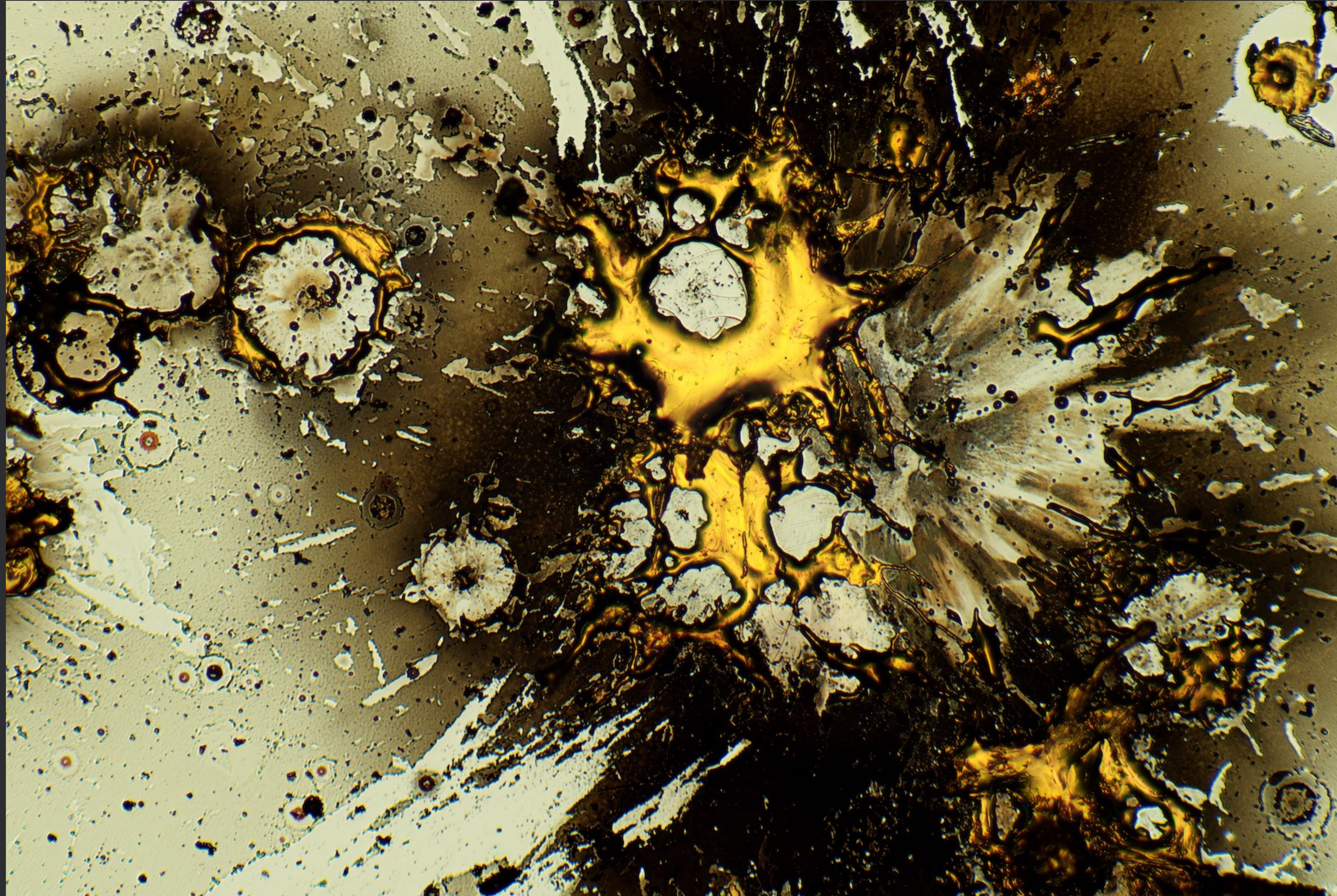
EM-C-00048-46036



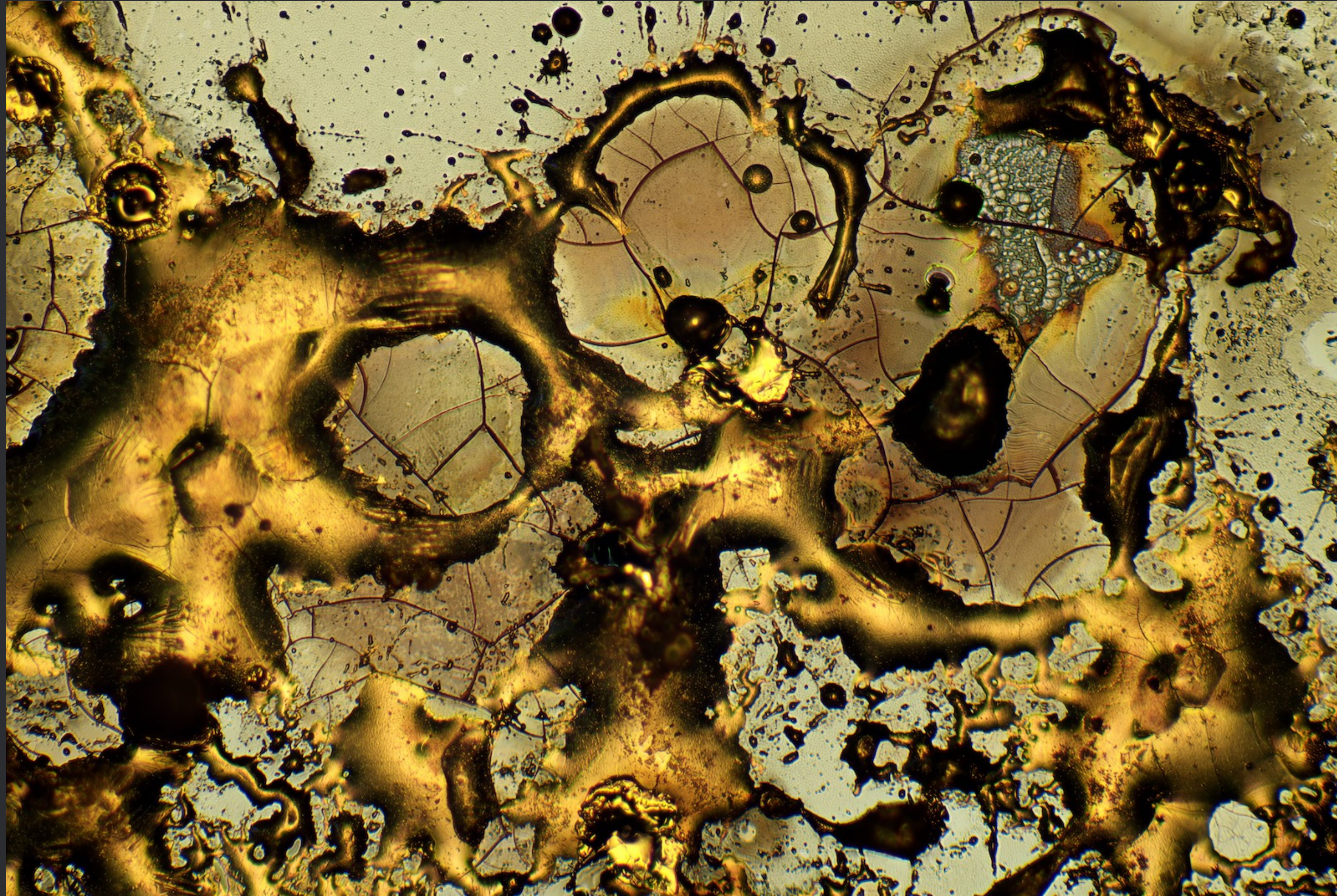
EM-C-00049-46036



EM-C-00050-46036



EM-C-00051-46036



EM-C-00052-46036

EVOLAS

LASER-Crafted Art

Each motif presented in this gallery represents a distinct perspective derived from the same physical GLOBE — a permanent material record of a single, irreversible laser-driven process.

Together, the motifs form a coherent landscape of views and interpretations. None of them alters the underlying work; each reveals a different position within the same physical reality.

This Preview Gallery provides an overview of the visual possibilities contained within a single EVOLAS GLOBE and serves as a reference for further exploration. It applies equally to all officially issued edition instances of the main artwork derived from it. Individual ownership and edition numbers are defined separately in the respective Certificates of Authenticity.

Werner Busenius

Founder & Laser Art Creator | EVOLAS

www.evolas.art