

EVOLAS

LASER-Crafted Art

Where light ignites matter.

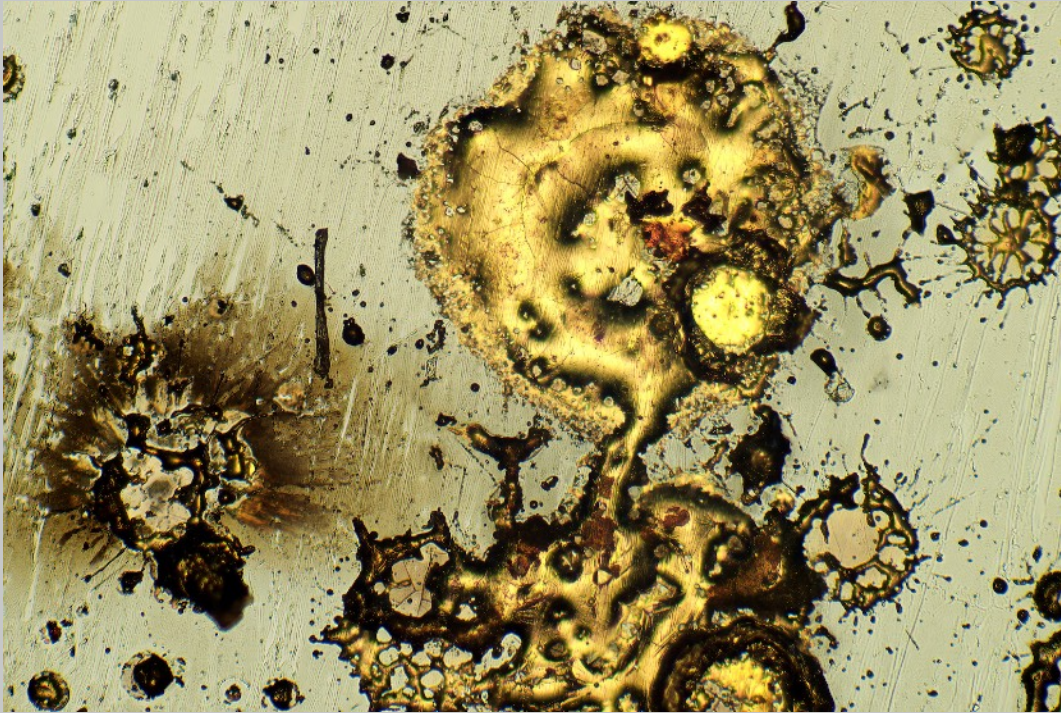
And matter becomes art.

Artwork Statement

Critical Exposure



The Artwork



Essential Metadata

Artwork

Artwork Title:	Critical Exposure
EVOLAS Motif ID:	EM-P-00037-46036
Edition:	10
Motif Creation Date:	January 14, 2026

Origin

Associated GLOBE ID:	EG-00234-46008
GLOBE Production Date:	December 17, 2025
Dimension of visible image section:	1,331 μm \times 893 μm
NFT ID:	assigned upon acquisition

This artwork is a curated microscopic view extracted from a singular physical GLOBE.



Artist's Interpretation

The image reflects a state of critical exposure.

Structures are subjected to conditions of extreme intensity — forces converge, pressure accumulates, and material is driven beyond its zone of equilibrium.

In this moment of exposure, stability is no longer a given.

Boundaries begin to soften, contours lose definition, and the distinction between resilience and failure becomes increasingly ambiguous.

This is not the depiction of collapse, nor of resistance.

It captures the precise interval in which the outcome remains undecided.

A threshold is reached — where persistence and disintegration coexist, where structure is strained to its limits without yet surrendering its form.

The image embodies a condition of maximum strain:

a suspended state defined by uncertainty, intensity,
and the latent potential for irreversible transformation.



Contextual Closure

This artwork represents a singular, non-reproducible material configuration that exists as part of a microscopic metallic landscape permanently present on and within the associated EVOLAS GLOBE.

Beyond the main motif *Critical Exposure*, additional distinct motifs have been identified, extracted, and artistically articulated from other regions of the same GLOBE. These motifs originate from the same physical event and material environment but reveal alternative structural constellations and perspectives within that shared landscape.

Access to the acquisition of these additional motifs is exclusively reserved for collectors who have acquired the corresponding main artwork derived from this GLOBE. Detailed visual and contextual information about these motifs is provided in a separate document (Preview Gallery).

The acquisition of this artwork includes not only the digital image and its associated NFT, but also the physical GLOBE on which the motif is permanently preserved. The work therefore exists simultaneously as a physical material object and as a digitally represented artwork — inseparably linked to the same irreversible material origin.

Further material and process information is provided via the EVOLAS website.

This Artwork Statement applies uniformly to all officially issued edition instances of this motif. Individual edition numbers and cryptographic identifiers are documented separately in the respective Certificate of Authenticity.