

# EVOLAS

LASER-Crafted Art

Where light ignites matter.

And matter becomes art.

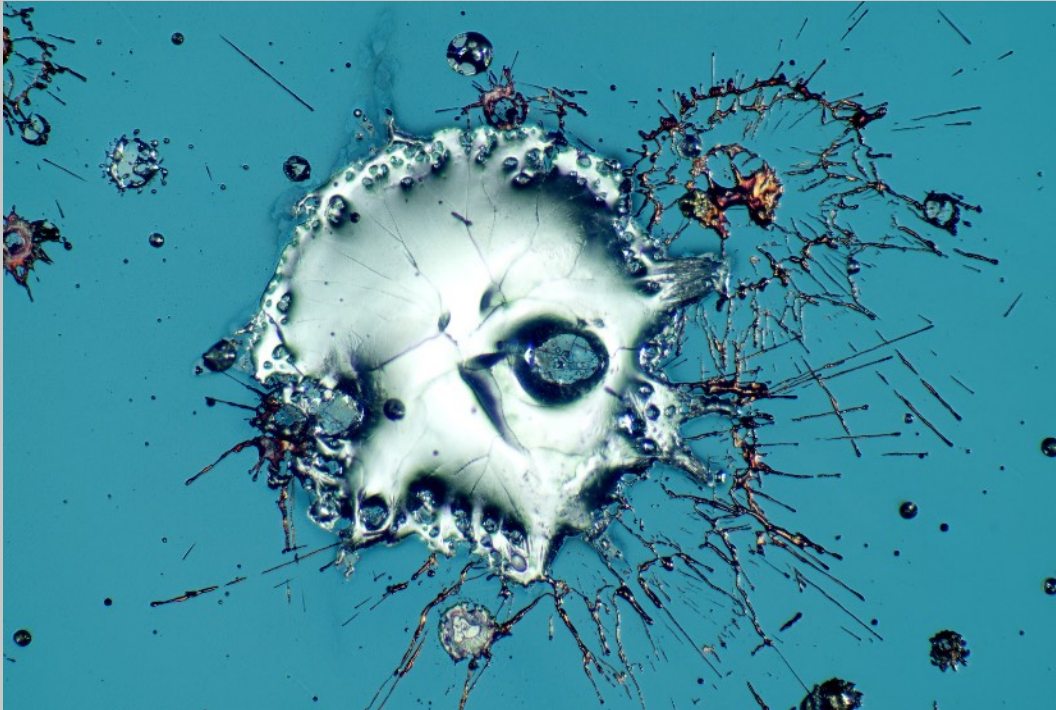
Artwork Statement

## The Skull



---

## The Artwork



## Essential Metadata

### Artwork

Artwork Title:	The Skull
EVOLAS Motif ID:	EM-P-00037-46036
Edition:	3
Motif Creation Date:	January 19, 2026

### Origin

Associated GLOBE ID:	EG-00250-46008
GLOBE Production Date:	December 17, 2025
Dimension of visible image section:	1,331 $\mu\text{m}$ $\times$ 893 $\mu\text{m}$
NFT ID:	assigned upon acquisition

This artwork is a curated microscopic view extracted from a singular physical GLOBE.



---

## Artist's Interpretation

The image confronts the viewer with a structure that appears familiar,  
yet remains physically alien.

What resembles a skull is not depicted,  
but emerges from the interaction of matter under extreme conditions.

The form is not designed.  
It is revealed.

Fractures, cavities, and radial traces suggest both impact and erosion,  
as if the structure were shaped simultaneously by force and decay.

The image exists in a state of tension between recognition and abstraction.  
It invites interpretation without resolving it.

What remains is not a symbol of death,  
but a record of exposure —  
to energy, to transformation, and to the irreversible nature of material processes.



## Contextual Closure

*The Skull* exists as a singular, non-reproducible motif that physically originates from a microscopic metal landscape permanently present on and within its corresponding EVOLAS GLOBE. The structure captured in this artwork is not a constructed or repeatable form, but the irreversible material outcome of a high-energy laser–metal interaction preserved within its glass body.

In addition to the main motif presented here, the same GLOBE contains a limited number of further distinct motifs. These additional motifs were identified within other regions of the same physical material landscape and have been individually selected and artistically articulated. Together, they form a coherent but non-hierarchical set of related visual expressions originating from one shared physical reality.

Collectors who acquire *The Skull* obtain exclusive access rights to these additional motifs associated with the same GLOBE. Details on these further motifs, including their visual characteristics and identifiers, are documented separately in the corresponding Preview Gallery. No additional motif from this GLOBE can be acquired independently or outside this defined relationship.

The acquisition of *The Skull* encompasses not only the digital artwork and its associated NFT, but also the underlying physical GLOBE on which the motif permanently exists. This ensures that the work remains inseparably linked to its material origin, affirming its status as a physically grounded artwork rather than a purely virtual image.

Further material and process information is provided via the EVOLAS website.

This Artwork Statement applies uniformly to all officially issued edition instances of this motif. Individual edition numbers and cryptographic identifiers are documented separately in the respective Certificate of Authenticity.