

EVOLAS

LASER-Crafted Art

Where light ignites matter.

And matter becomes art.

Preview Gallery | EM-P-00053-46041

Exclusive Motifs on EVOLAS GLOBE EG-00250-46008

About This Gallery



Main EVOLAS Motif:

ARTWORK NAME: "The Skull"
MOTIF ID: EM-P-00053-46041
GLOBE ID: EG-00250-46008
EDITION: 3

This gallery presents the additional motifs that exist on the same EVOLAS GLOBE as the main artwork *The Skull*. All motifs shown here originate from distinct regions of a single, continuous microscopic metal landscape permanently preserved on this GLOBE.

The main artwork represents a carefully selected focal point within this landscape. The additional motifs do not constitute separate or independent works; instead, they reveal further perspectives, structural variations, and spatial conditions emerging from the same physical material reality.

All motifs were identified, selected, and artistically articulated under identical microscopic and optical conditions. While sharing the same physical origin, each motif reflects a distinct curatorial and compositional decision within the same material landscape.

Differences between the motifs arise from variations in structure, density, dispersion, and spatial orientation rather than from changes in process or technique. Each image represents a consciously chosen viewpoint within the same irreversible material event.

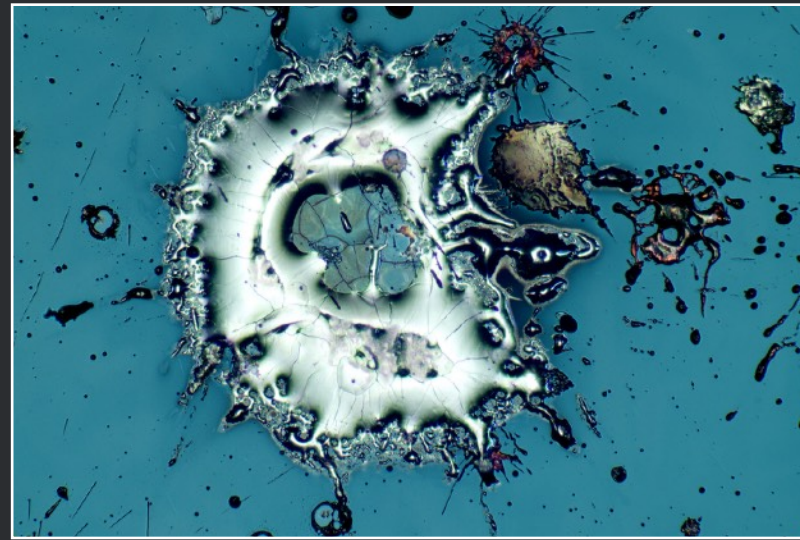
All motifs shown in this gallery are intrinsically linked to a specific EVOLAS GLOBE and to the permanent microscopic metal structures present on and within its glass body — the irreversible material outcome of a complex physical formation process initiated by high-intensity laser interaction with metal. None of these motifs exists as a freely available or independent work.

Access to the acquisition of any additional motif is exclusively reserved for collectors who have acquired the corresponding main artwork derived from the same GLOBE. Each additional motif therefore constitutes an exclusive extension of that specific artwork and cannot be obtained outside this defined relationship.

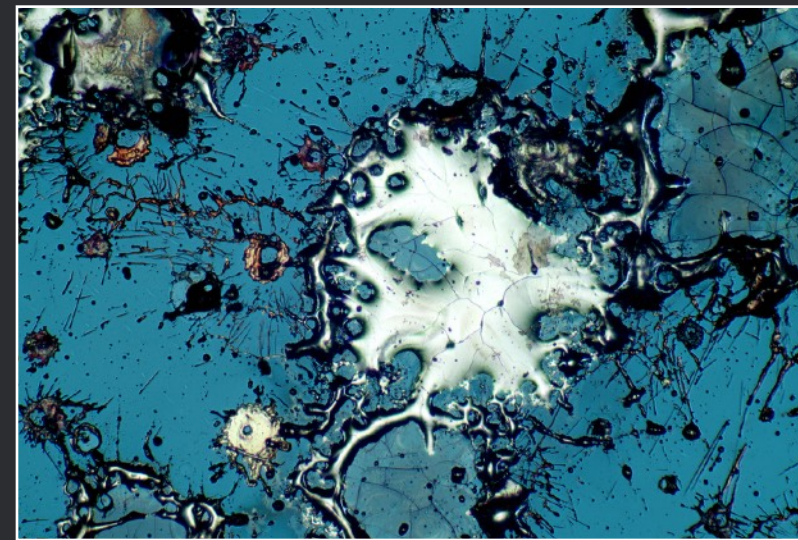
This preview presents the complete set of additional motifs together with their individual EVOLAS codes, providing a structured overview of the visual possibilities contained within a single GLOBE.

Additional Motifs

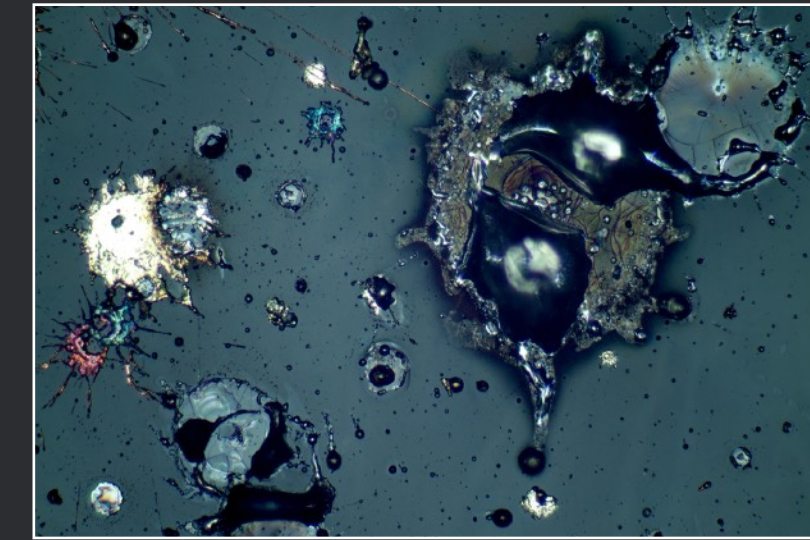
On EVOLAS GLOBE EG-00250-46008



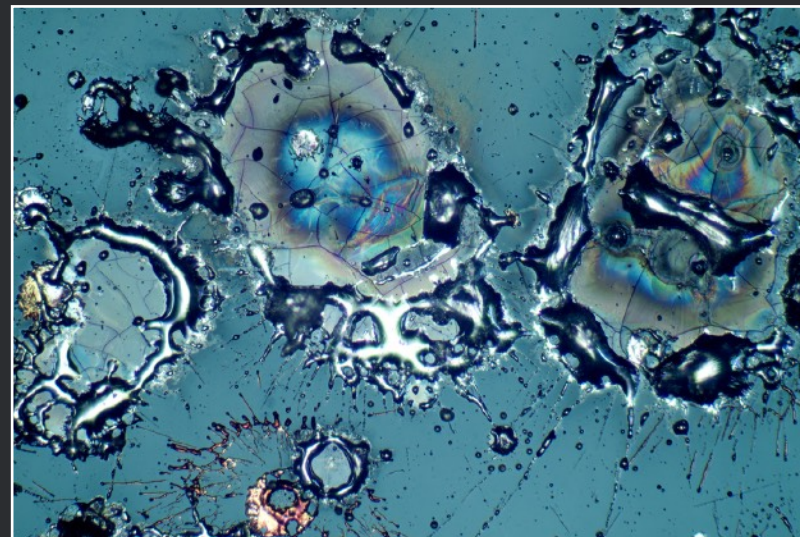
EM-C-00056-46041



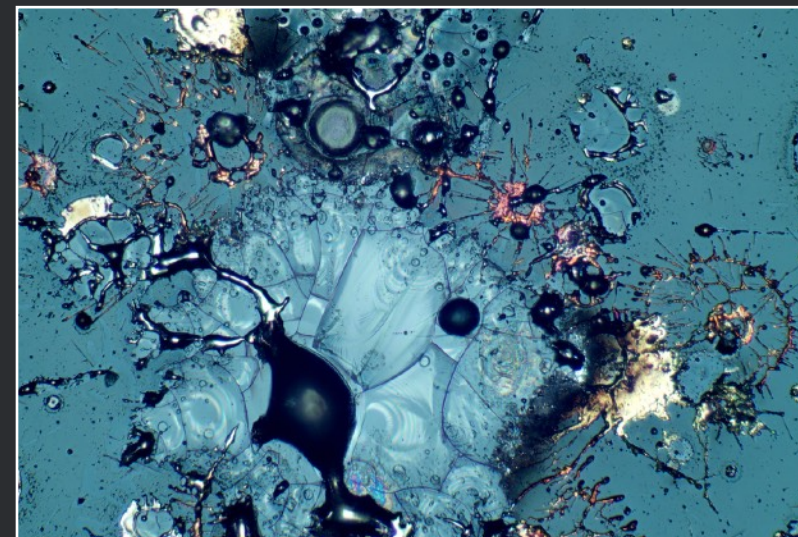
EM-C-00062-46041



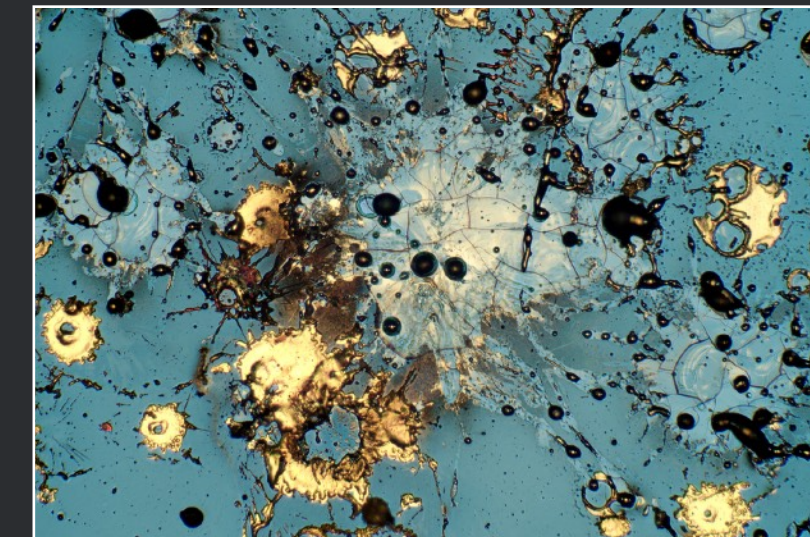
EM-C-00060-46041



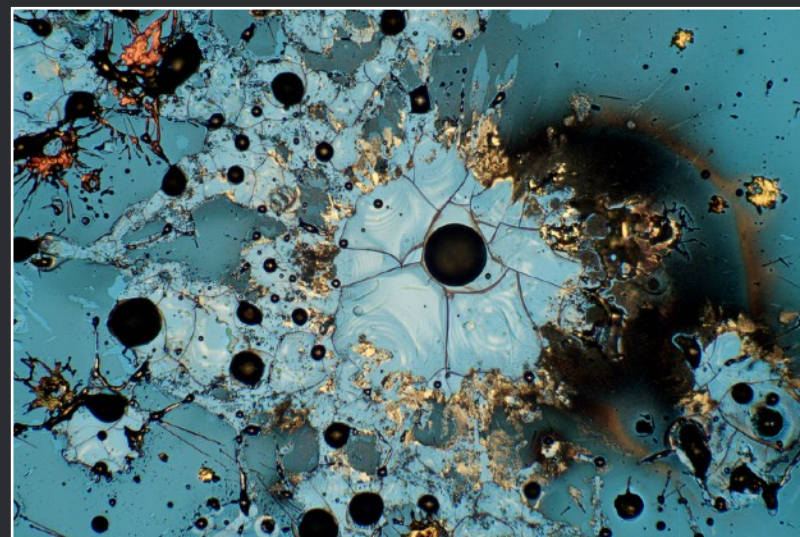
EM-C-00059-46041



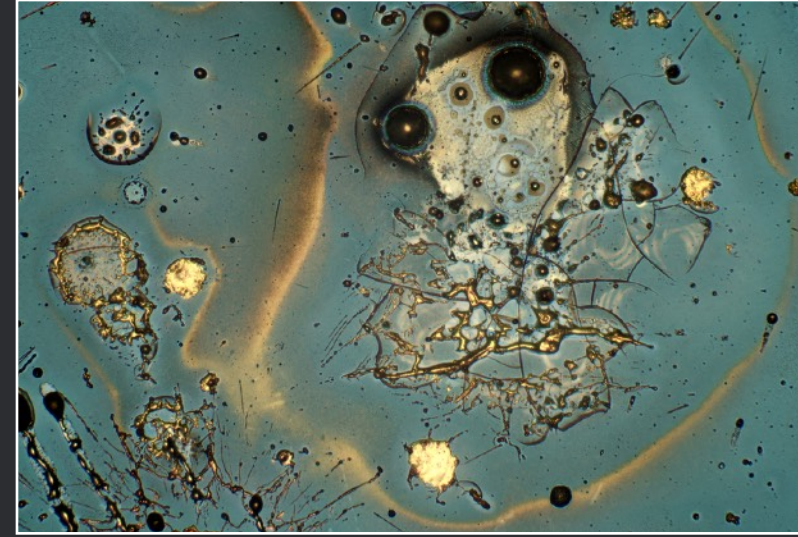
EM-C-00063-46041



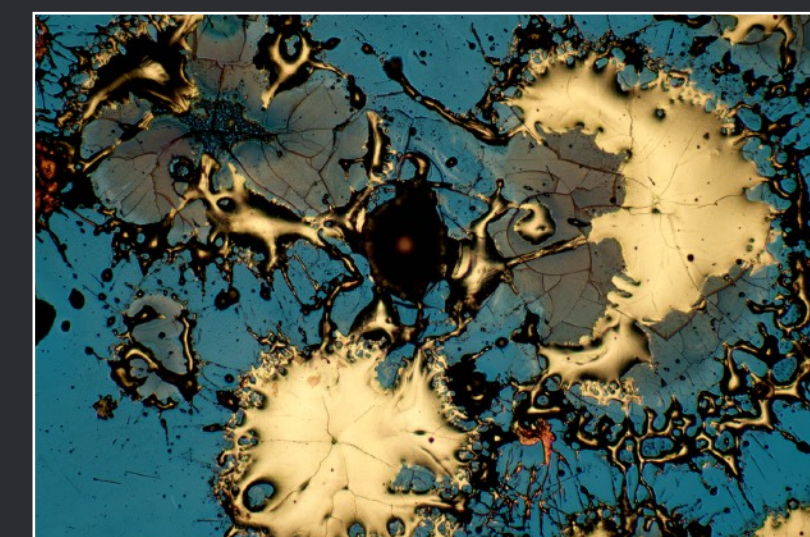
EM-C-00066-46041



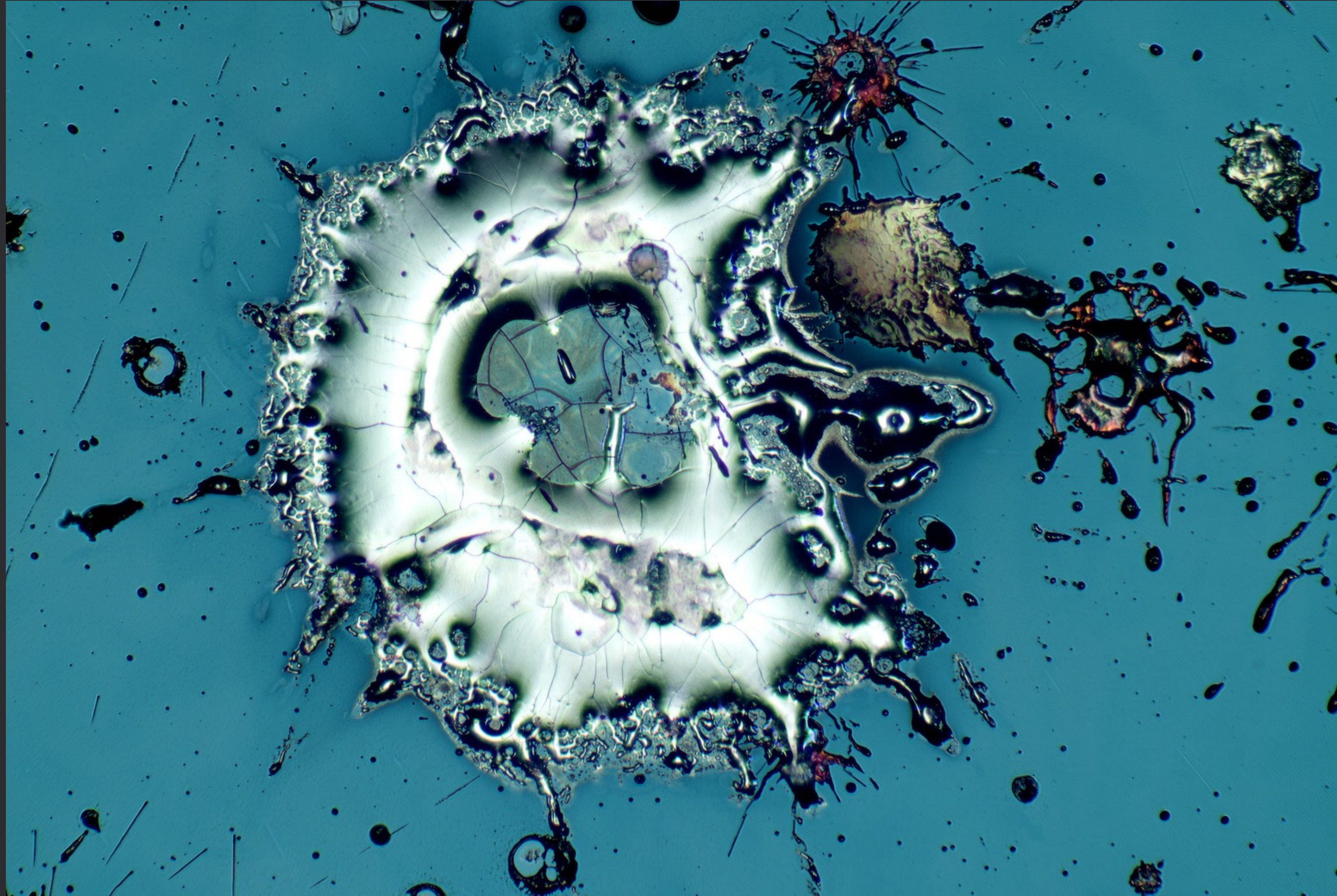
EM-C-00064-46041



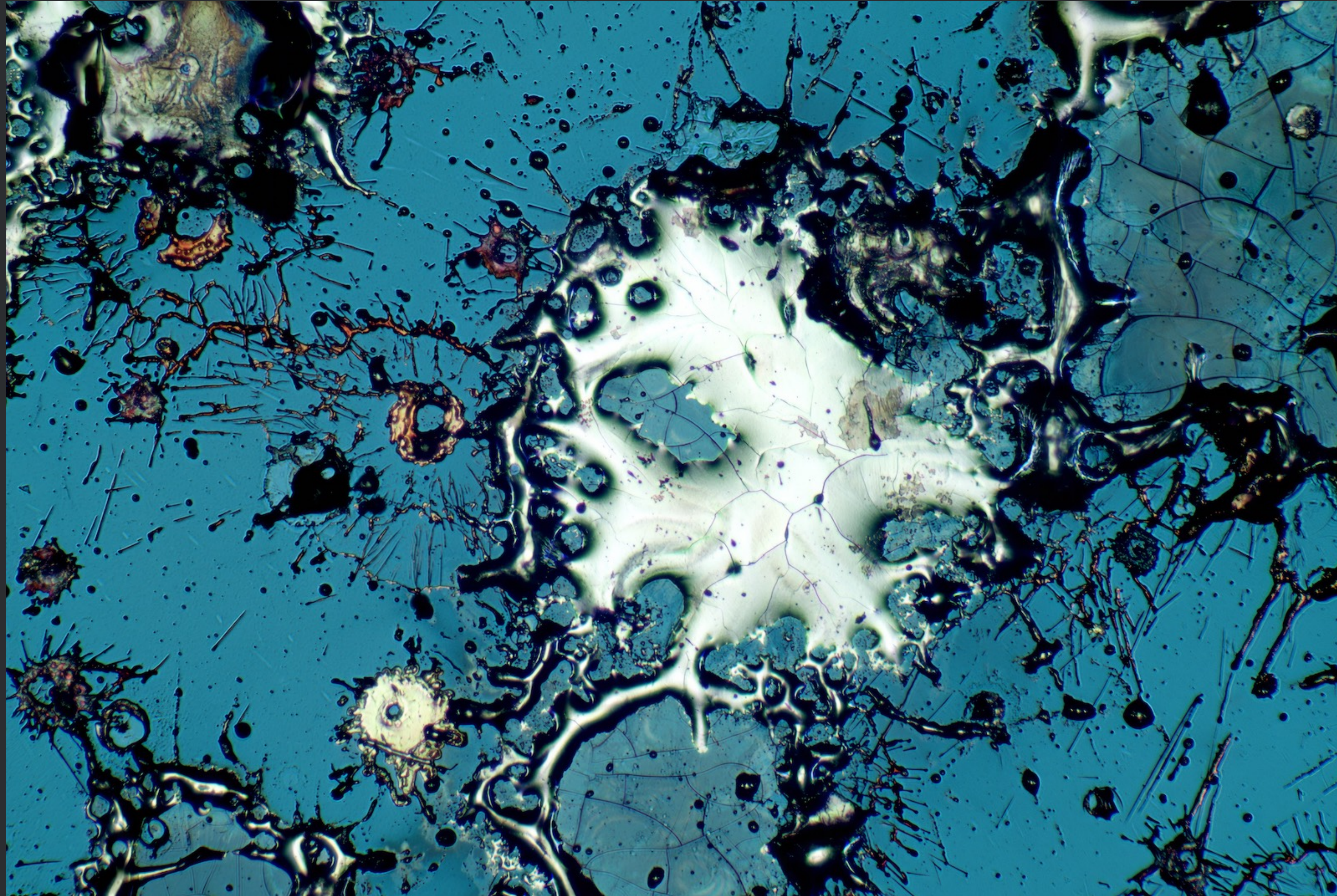
EM-C-00065-46042



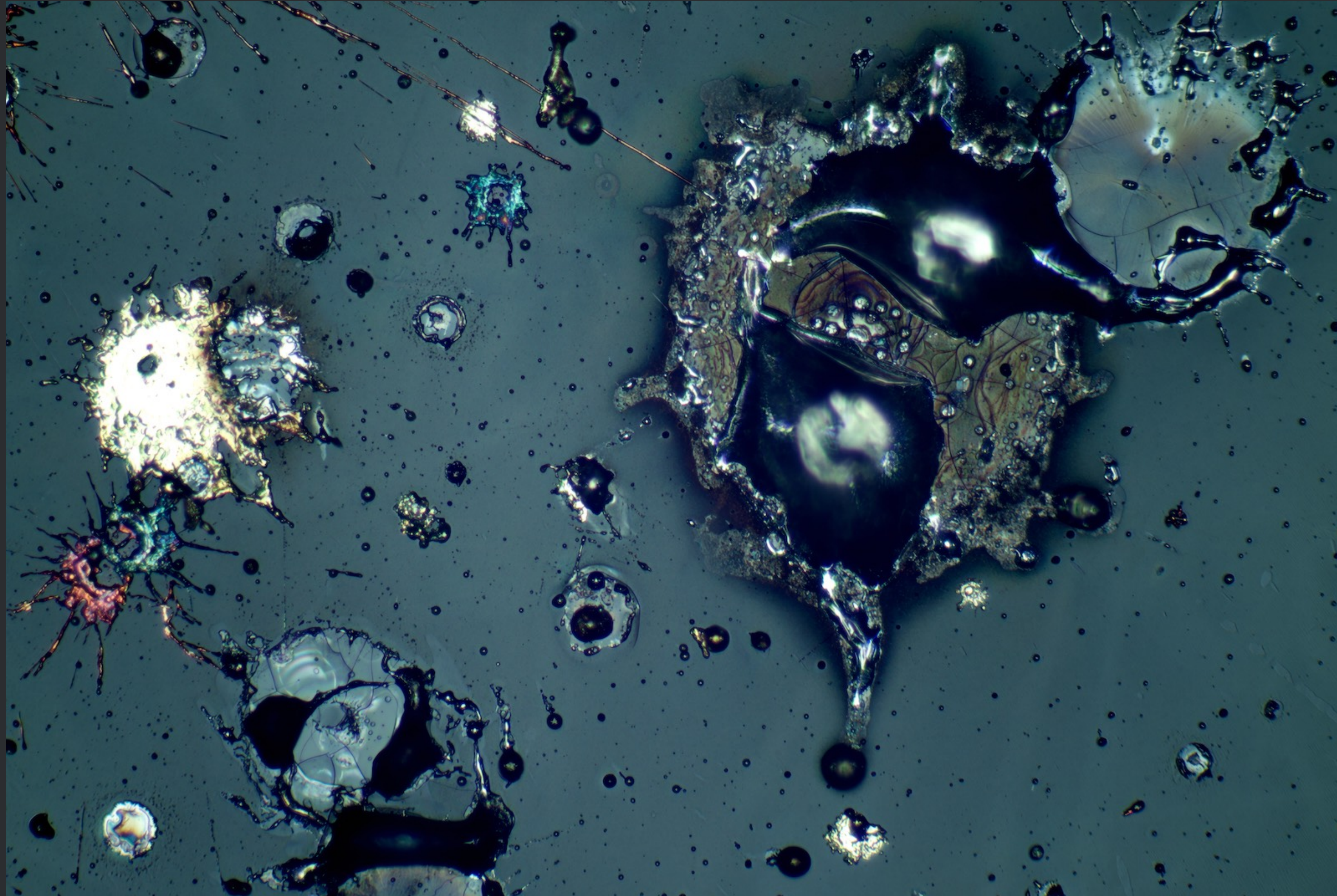
EM-C-00071-46042

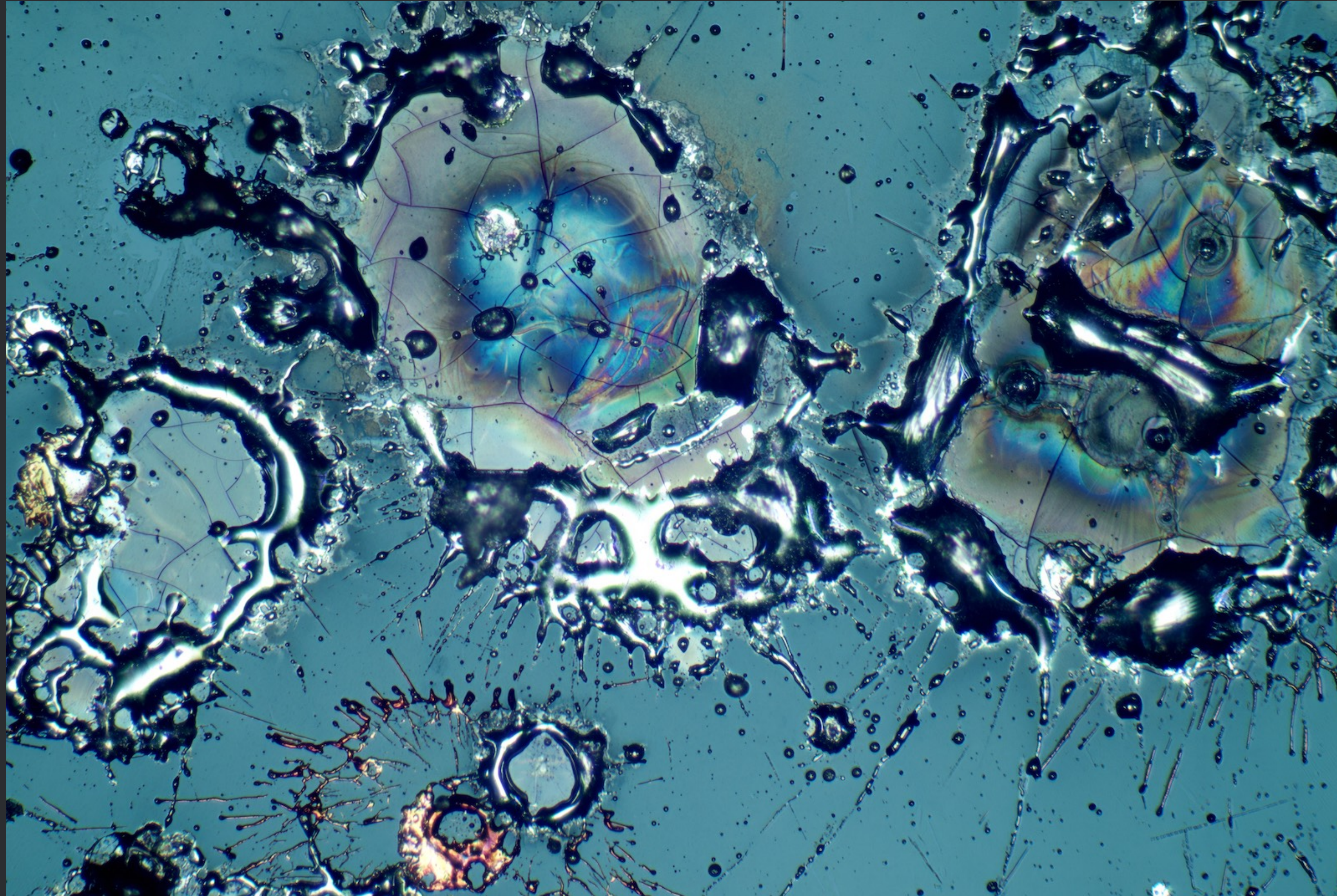


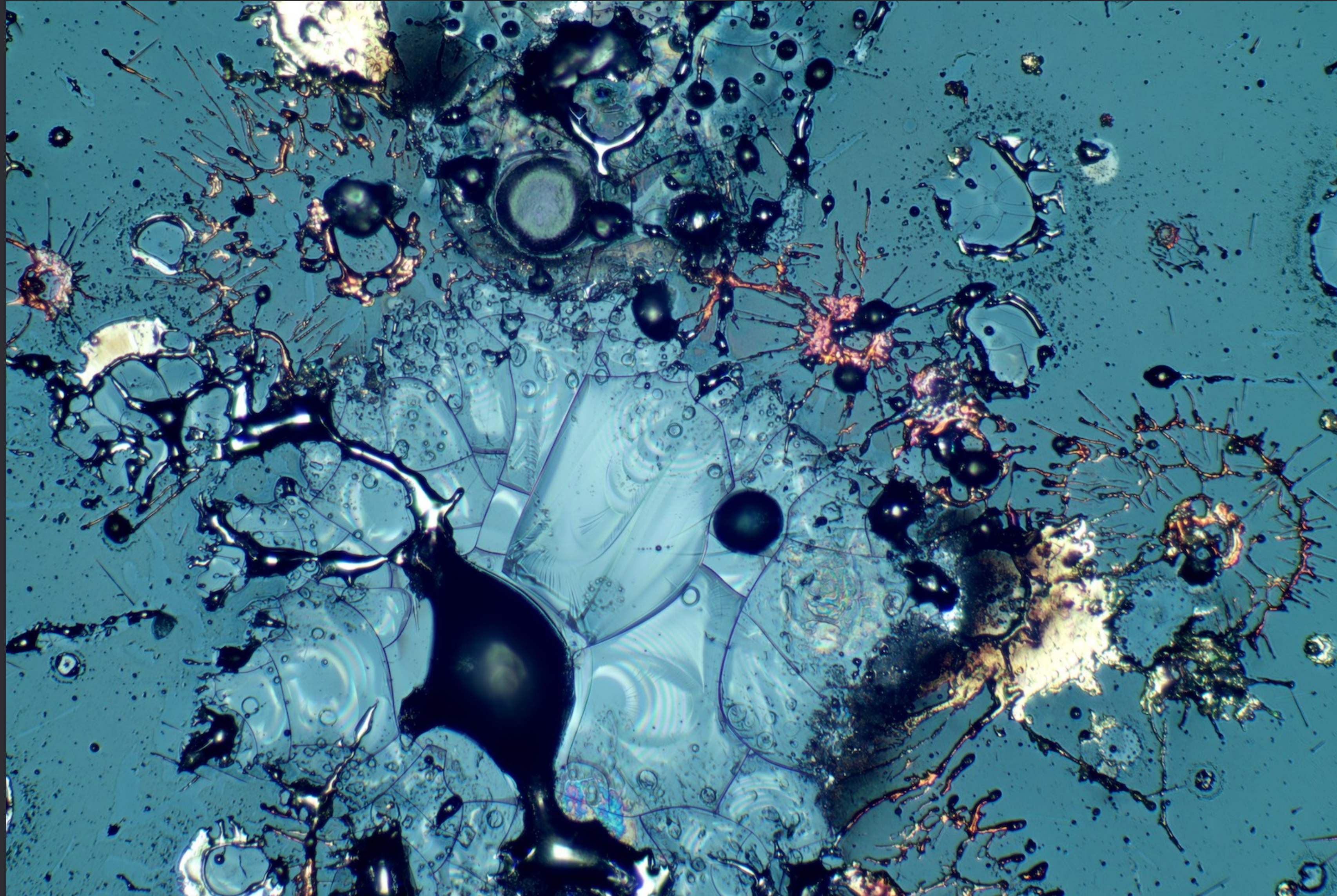
EM-C-00056-46041



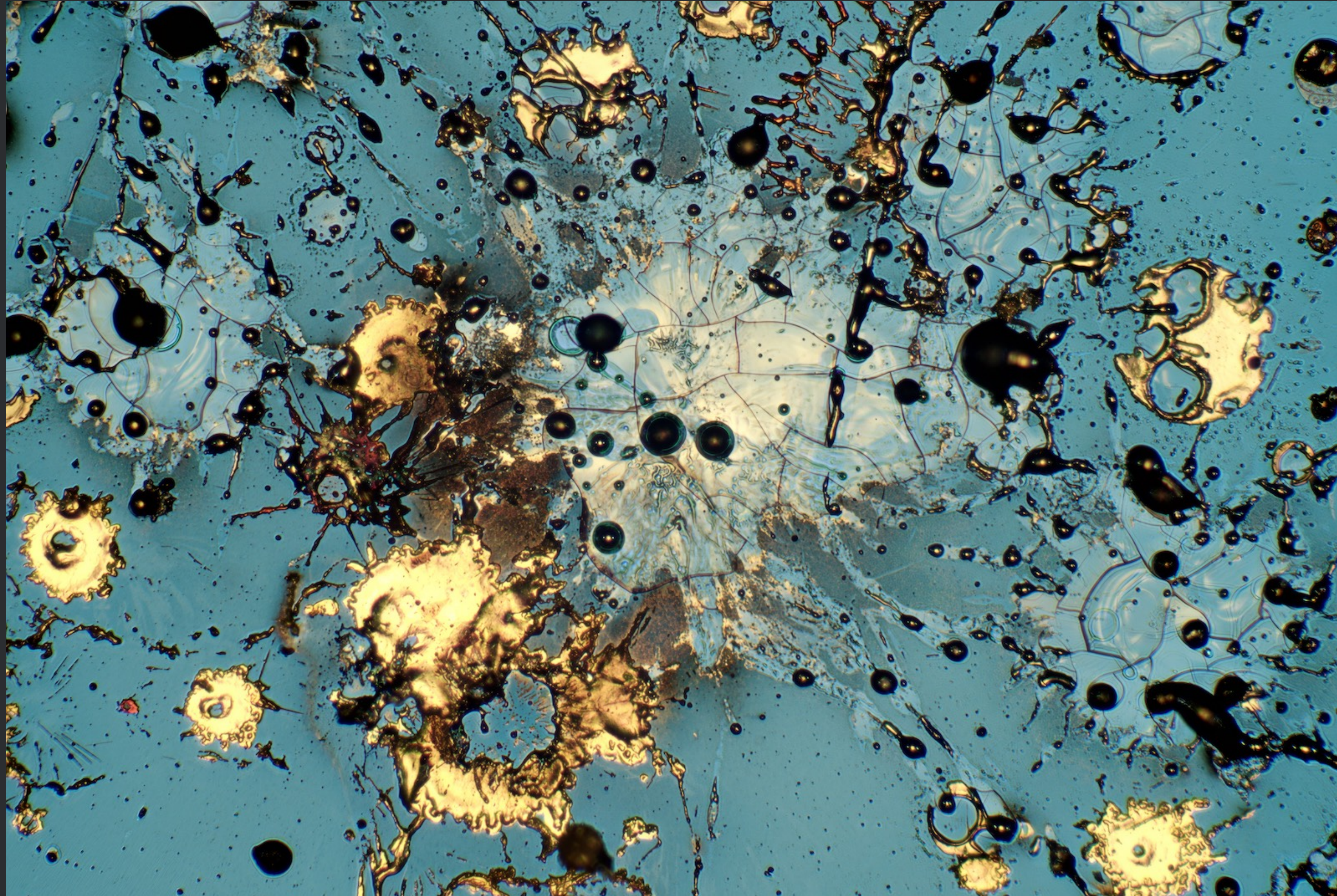
EM-C-00062-46041



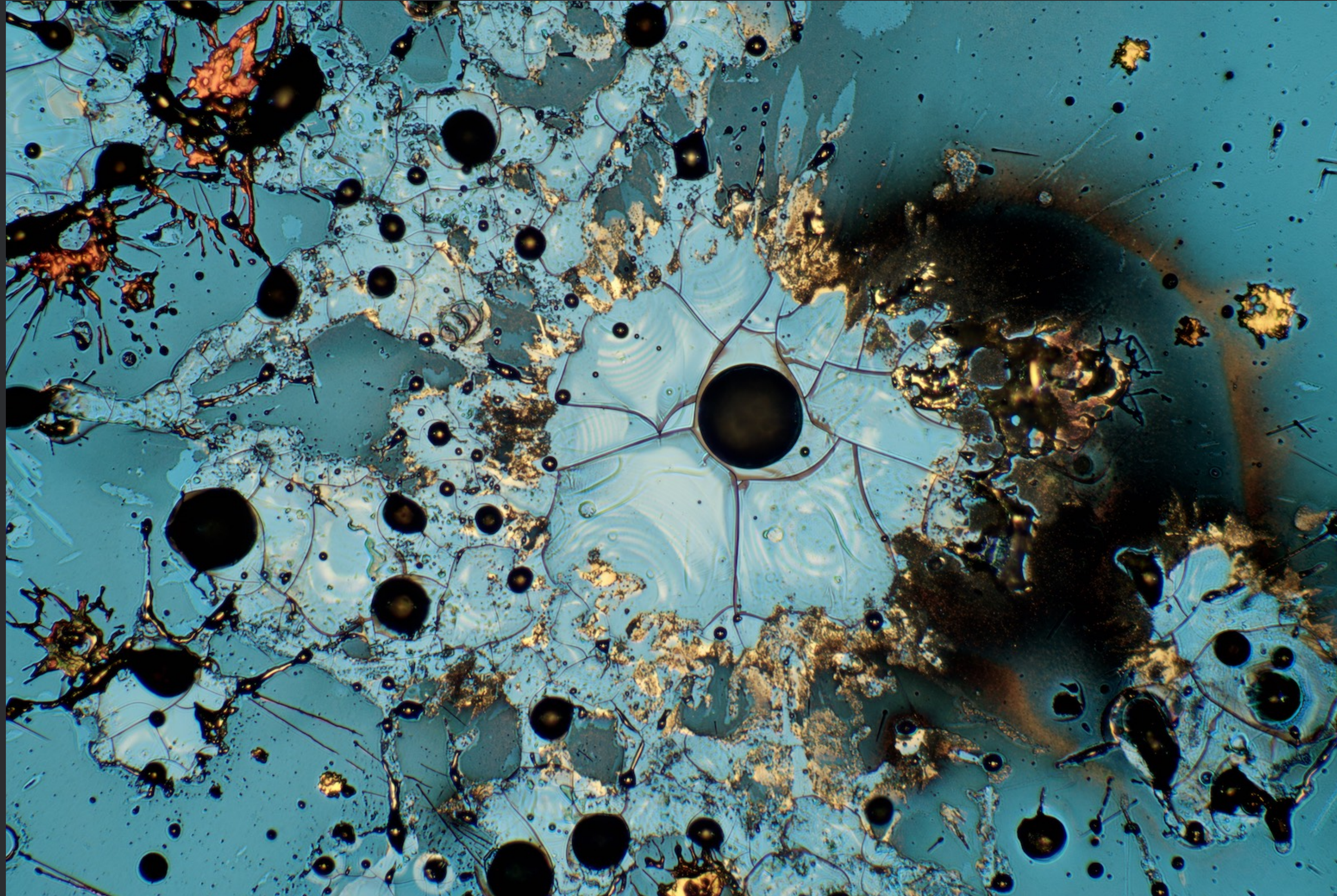




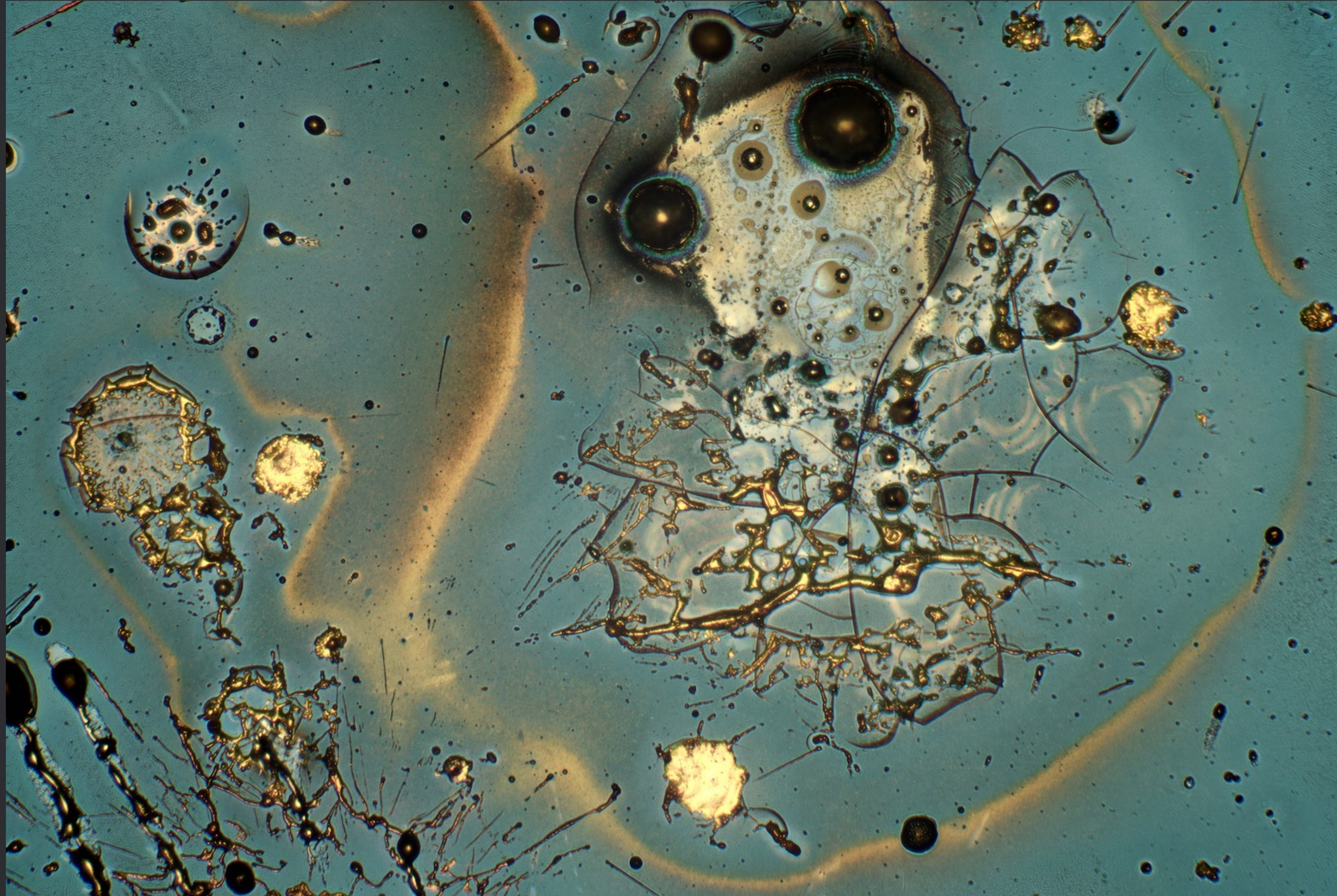
EM-C-00063-46041



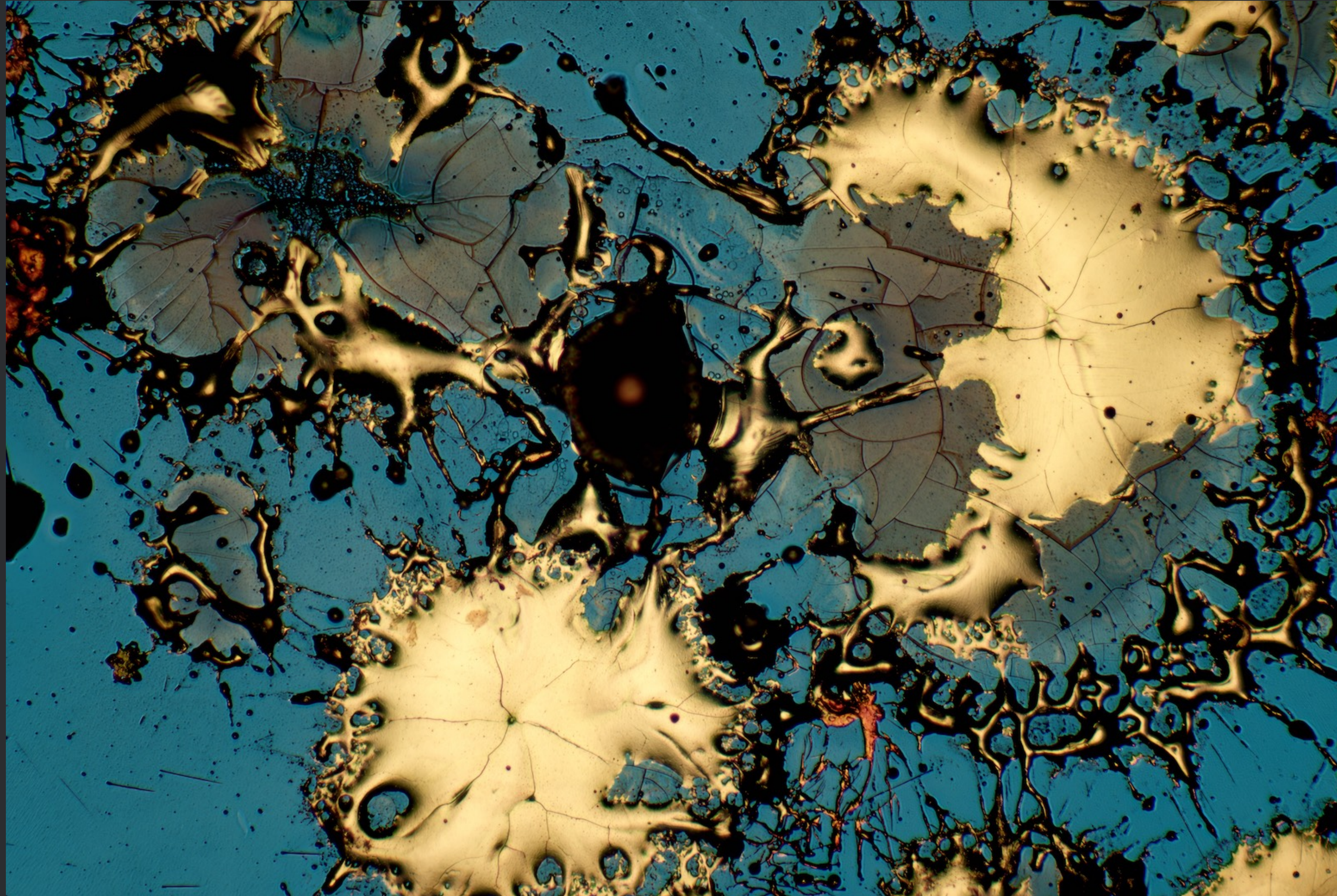
EM-C-00066-46041



EM-C-00064-46041



EM-C-00065-46042



EM-C-00071-46042

EVOLAS

LASER-Crafted Art

Each motif presented in this gallery represents a distinct perspective derived from the same physical GLOBE — a permanent material record of a single, irreversible laser-driven process.

Together, the motifs form a coherent landscape of views and interpretations. None of them alters the underlying work; each reveals a different position within the same physical reality.

This Preview Gallery provides an overview of the visual possibilities contained within a single EVOLAS GLOBE and serves as a reference for further exploration. It applies equally to all officially issued edition instances of the main artwork derived from it. Individual ownership and edition numbers are defined separately in the respective Certificates of Authenticity.

Werner Busenius

Founder & Laser Art Creator | EVOLAS

www.evolas.art